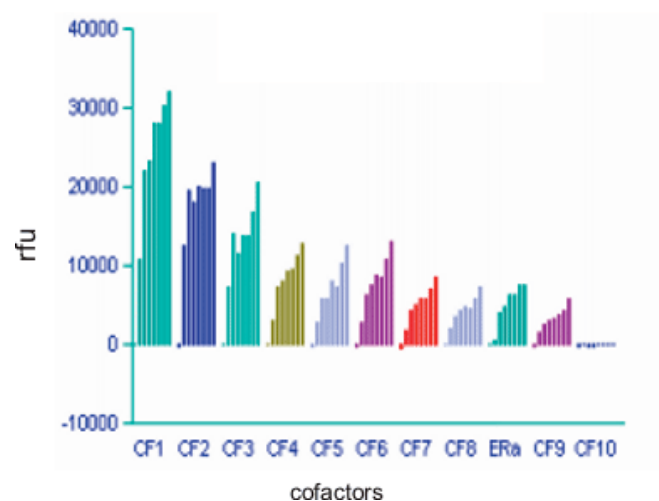


## Y2H - Compound selective cofactor recruitment by the ER $\alpha$

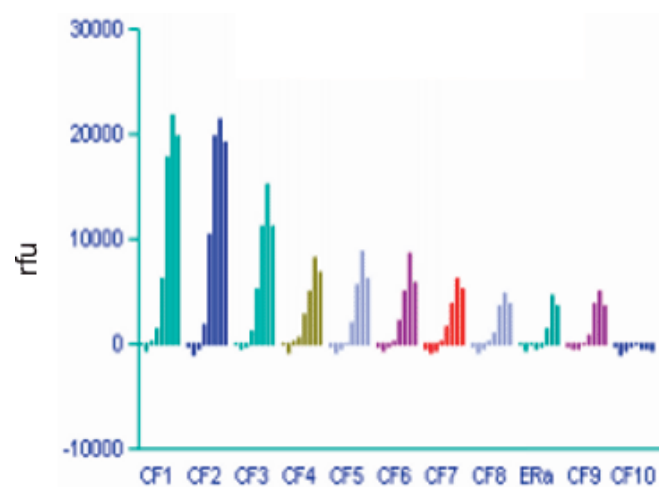
The compound concentrations increasing from left to right.  
Main results:

- coumestrol differs from estradiol mainly in potency
- hexestrol clearly promotes CF9 recruitment
- genistein is of lower potency than estradiol and does not promote ER $\alpha$ -dimerisation
- ICI172,780 does not induce CF-recruitment, but clearly supports ER $\alpha$ -dimerisation

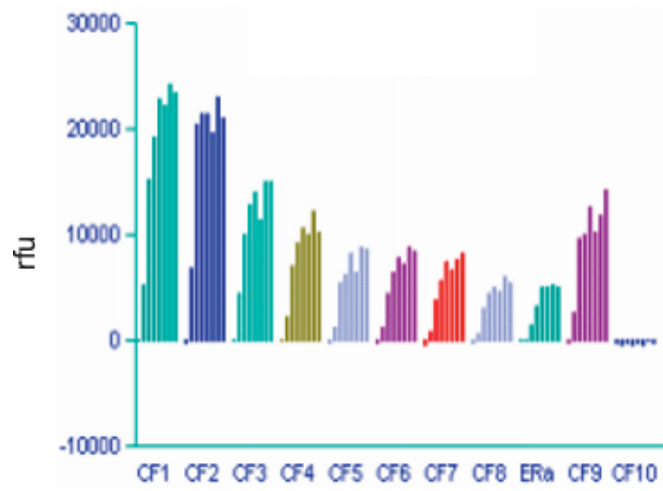
### 17 $\beta$ -estradiol



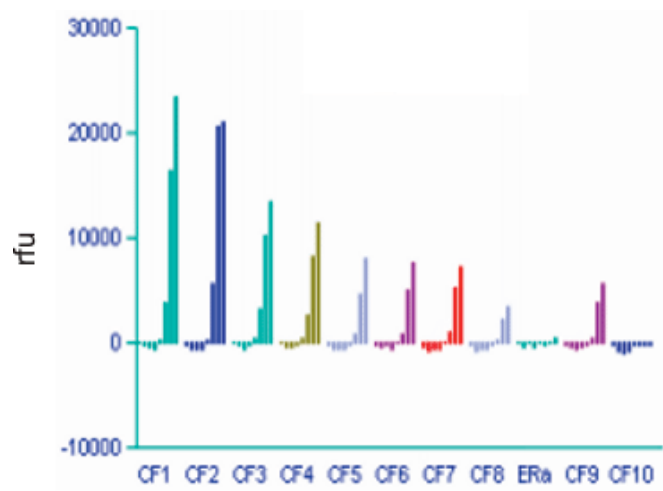
### coumestrol



### hexestrol



### genistein



### ICI172,780

